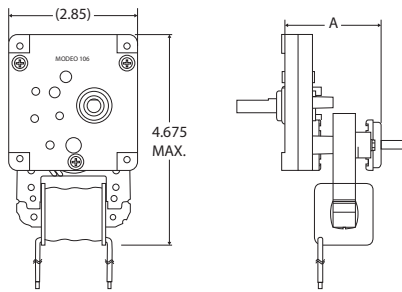


**A.C. GEARMOTORS**



**106 Gearmotor**



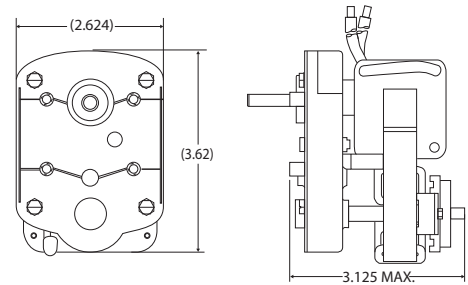
**106 Gearmotor**

**Uses:** Jewellery and clothing displays, toys and candies dispensers.

**Features:**  
Built with pinion and helical gear.  
5/16" or 1/4" output shaft.  
Torque from 75 to 100 lb/in.  
Continuous operation and low noise level.



**107 Gearmotor**



**Note:** Any model, can be supplied with cooling fan.

Model	RPM	Volts	HZ	LB/IN	Output Shaft	A
106-010002894	1	120	60	20	5/16"	2.15"
106-010002926	3	120	60	40	5/16"	2.50"
106-010003115	3	120	60	20	5/16"	2.00"

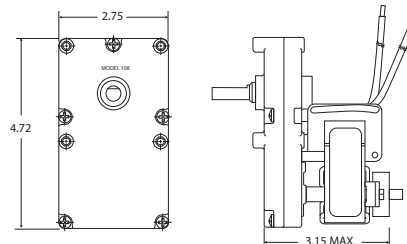
**107 Gearmotor**

Model	RPM	Volts	AMP	LB/IN	Output Shaft
107-980111-011	6	120	0.28	40	1/4"
107-982331-001	12	120	0.48	20	1/4"

**108 Gearmotor**

**Uses:** Jewellery and clothing displays, toys and candies dispensers.

**Features:**  
Built with pinion and helical gear.  
Available with 5/16" international hexagon, in the output shaft.  
5/16" hexagon in to the shaft.  
Torque from 25 to 200 lb-in.  
Continuous operation and low noise level.



Model	RPM	Volts	LB/IN	Output Shaft
108-010000619	4	120	80	3/8"
108-010000620	6	120	80	3/8"
108-010000220	6	120	80	5/16"
108-010001391	6	120	110	HEX. 5/16"
108-010001896	16	120	70	5/16"
108-010001868	33	120	25	5/16"